

ÄRE ÖSTERSUND**RNP RWY 30****INSTRUMENT
APPROACH
CHART – ICAO****THR ELEV 1233 ft, AD ELEV 1233 ft**

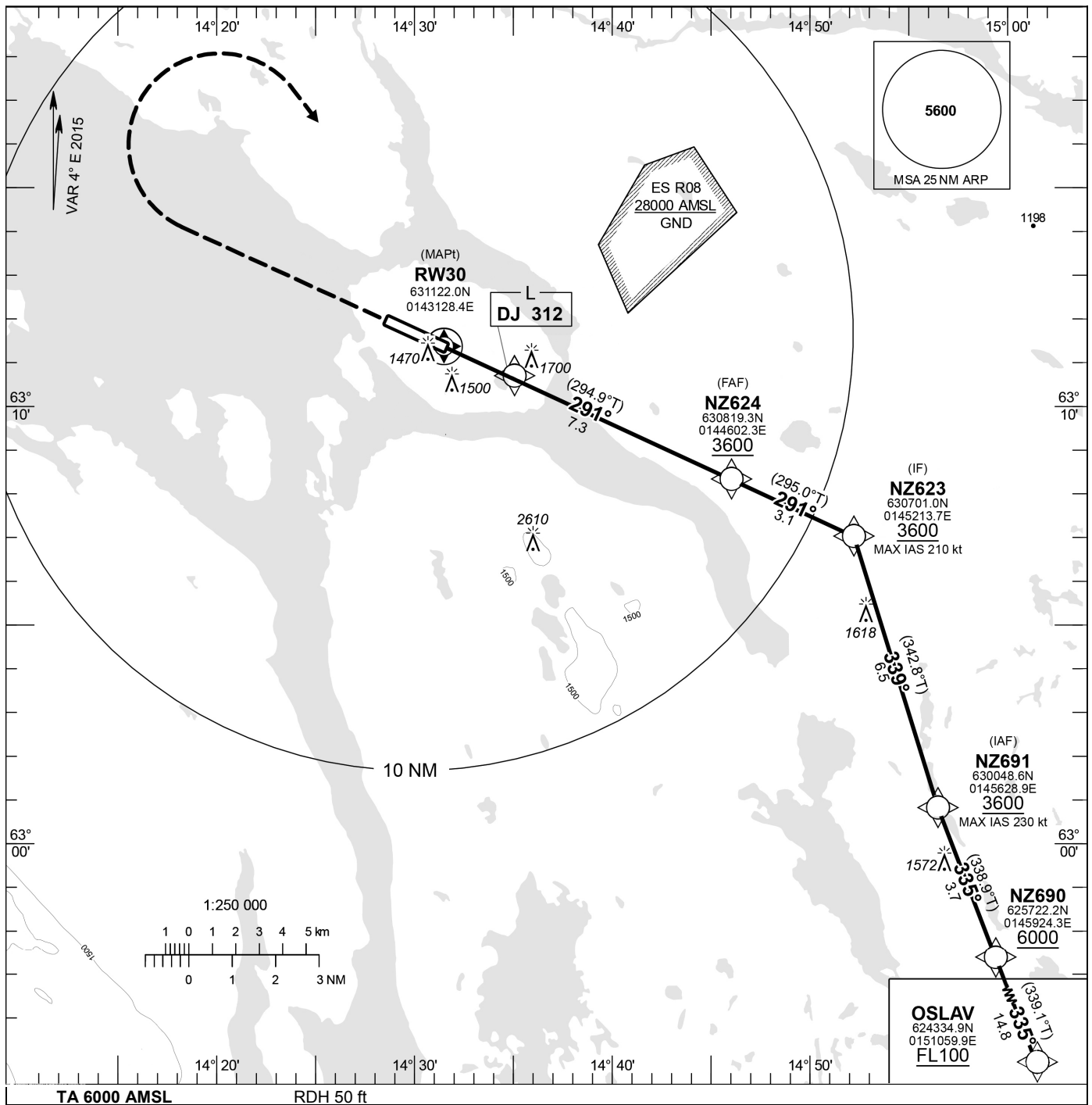
OCH are related to THR.

Circling HGT are related to AD ELEV.

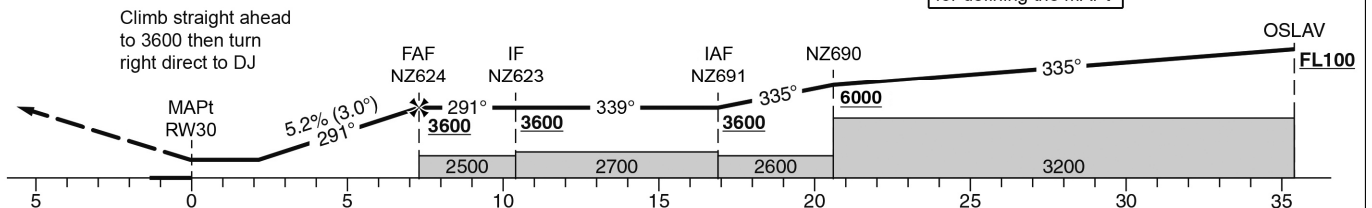
BRG are MAG. ALT, HGT and ELEV in ft.

BARO-VNAV not below -20° C**ÖSTERSUND TOWER**

135.655



No turn before MAPt

Climb straight ahead
to 3600 then turn
right direct to DJTiming not authorized
for defining the MAPt

OCA (H)					Final approach FAF-MAPt distance 7.3 NM						
Cat of ACFT	A	B	C	D	Dist to RWY 30 (NM)	6	5	4	3	2	1
LNAV/VNAV		1650 (420)			Altitude (ft)	3194	2875	2557	2239	1920	-
LNAV		1950 (720)			GS	90	110	130	150	170	190
CIRCLING	1950 (720)	2000 (770)	2100 (870)	3010 (1780)	FAF-RWY 30 (7.3 NM)	MIN:SEC	4:52	3:59	3:22	2:55	2:35
					Rate of descent (5.2%)	ft/MIN	480	580	690	790	900

CHANGE: Editorial

ÅRE ÖSTERSUND

RNP RWY 30

Instrument Approach Procedure Coding Tables

Path Descriptor	Waypoint Identifier	Fly-over	Course °M (°T)	Turn Direction	Altitude	Speed	VPA/ RDH	Rec Navaid	Navigation Specification
IF	OSLAV	-	-	-	+FL100	-	-	-	RNAV1
TF	NZ690	-	335° (339.1°)	-	+6000	-	-	-	RNAV1
TF	NZ691	-	335° (338.9°)	-	+3600	-230	-	-	RNAV1
TF	NZ623	-	339° (342.8°)	-	+3600	-210	-	-	RNP APCH
TF	NZ624	-	291° (295.0°)	-	+3600	-210	-	-	RNP APCH
TF	RW30	Y	291° (294.9°)	-	-	-	-3.0/50	-	RNP APCH
CA	-	-	291° (294.7°)	-	+3600	-	-	-	RNP APCH
DF	DJ	-	-	R	+3600	-	-	-	RNP APCH